

© Copyright SEK Svensk Elstandard. Reproduction in any form without permission is prohibited.

Datahallsutrymmen och tillhörande system – Del 4-8: Effektivitet – koldioxidanvändning

*Information technology –
Data centre facilities and infrastructures –
Part 4-8: Carbon usage effectiveness*

Som svensk standard gäller europastandarden EN 50600-4-8:2022. Den svenska standarden innehåller den officiella engelska språkversionen av EN 50600-4-8:2022.

ICS 35.020.00; 35.110.00; 35.160.00

Denna standard är fastställd av SEK Svensk Elstandard,
som också kan lämna upplysningar om **sakinnehållet** i standarden.
Postadress: Box 1284, 164 29 KISTA
Telefon: 08 - 444 14 00.
E-post: sek@elstandard.se. Internet: www.elstandard.se

Standarder underlättar utvecklingen och höjer elsäkerheten

Det finns många fördelar med att ha gemensamma tekniska regler för bl a mätning, säkerhet och provning och för utförande, skötsel och dokumentation av elprodukter och elanläggningar.

Genom att utforma sådana standarder blir säkerhetsfordringar tydliga och utvecklingskostnaderna rimliga samtidigt som marknadens acceptans för produkten eller tjänsten ökar.

Många standarder inom elområdet beskriver tekniska lösningar och metoder som åstadkommer den elsäkerhet som föreskrivs av svenska myndigheter och av EU.

SEK är Sveriges röst i standardiseringsarbetet inom elområdet

SEK Svensk Elstandard svarar för standardiseringen inom elområdet i Sverige och samordnar svensk medverkan i internationell och europeisk standardisering. SEK är en ideell organisation med frivilligt deltagande från svenska myndigheter, företag och organisationer som vill medverka till och påverka utformningen av tekniska regler inom elektrotekniken.

SEK samordnar svenska intressenters medverkan i SEKs tekniska kommittéer och stödjer svenska experters medverkan i internationella och europeiska projekt.

Stora delar av arbetet sker internationellt

Utformningen av standarder sker i allt väsentligt i internationellt och europeiskt samarbete. SEK är svensk nationalkommitté av International Electrotechnical Commission (IEC) och Comité Européen de Normalisation Electrotechnique (CENELEC).

Standardiseringsarbetet inom SEK är organiserat i referensgrupper bestående av ett antal tekniska kommittéer som speglar hur arbetet inom IEC och CENELEC är organiserat.

Arbetet i de tekniska kommittéerna är öppet för alla svenska organisationer, företag, institutioner, myndigheter och statliga verk. Den årliga avgiften för deltagandet och intäkter från försäljning finansierar SEKs standardiseringsverksamhet och medlemsavgift till IEC och CENELEC.

Var med och påverka!

Den som deltar i SEKs tekniska kommittéarbete har möjlighet att påverka framtida standarder och får tidig tillgång till information och dokumentation om utvecklingen inom sitt teknikområde. Arbetet och kontakterna med kollegor, kunder och konkurrenter kan gynnsamt påverka enskilda företags affärsutveckling och bidrar till deltagarnas egen kompetensutveckling.

Du som vill dra nytta av dessa möjligheter är välkommen att kontakta SEKs kansli för mer information.

SEK Svensk Elstandard

Box 1284
164 29 Kista
Tel 08-444 14 00
www.elstandard.se

ICS 35.020; 35.110; 35.160

English Version

Information technology - Data centre facilities and infrastructures - Part 4-8: Carbon usage effectiveness

Technologie de l'information - Installation et infrastructures
de centres de traitement de données - Partie 4-8: Efficacité
de l'utilisation du carbone

Informationstechnik - Einrichtungen und Infrastrukturen von
Rechenzentren - Teil 4-8: Effektivität der Vermeidung von
CO₂-Emissionen

This European Standard was approved by CENELEC on 2022-12-12. CENELEC members are bound to comply with the CEN/CENELEC Internal Regulations which stipulate the conditions for giving this European Standard the status of a national standard without any alteration.

Up-to-date lists and bibliographical references concerning such national standards may be obtained on application to the CEN-CENELEC Management Centre or to any CENELEC member.

This European Standard exists in three official versions (English, French, German). A version in any other language made by translation under the responsibility of a CENELEC member into its own language and notified to the CEN-CENELEC Management Centre has the same status as the official versions.

CENELEC members are the national electrotechnical committees of Austria, Belgium, Bulgaria, Croatia, Cyprus, the Czech Republic, Denmark, Estonia, Finland, France, Germany, Greece, Hungary, Iceland, Ireland, Italy, Latvia, Lithuania, Luxembourg, Malta, the Netherlands, Norway, Poland, Portugal, Republic of North Macedonia, Romania, Serbia, Slovakia, Slovenia, Spain, Sweden, Switzerland, Türkiye and the United Kingdom.



European Committee for Electrotechnical Standardization
Comité Européen de Normalisation Electrotechnique
Europäisches Komitee für Elektrotechnische Normung

CEN-CENELEC Management Centre: Rue de la Science 23, B-1040 Brussels

Contents	Page
European foreword	4
Introduction	5
1 Scope	8
2 Normative references	8
3 Terms, definitions, abbreviations and symbols	8
3.1 Terms and definitions	8
3.2 Abbreviations	9
3.3 Symbols	10
4 Applicable area of the data centre	10
5 Determination of Carbon Usage Effectiveness	11
6 Measurement of Carbon Usage Effectiveness	11
6.1 General	11
6.2 Calculation and measurement method of CO ₂	11
6.2.1 Calculation and measurement period and frequency	11
6.2.2 Categories of Carbon Usage Effectiveness	11
7 Application of Carbon Usage Effectiveness	13
8 Reporting of Carbon Usage Effectiveness	13
8.1 Requirements	13
8.1.1 Standard construct for communicating CUE data	13
8.1.2 Data for public reporting of CUE	13
8.2 Recommendations	14
8.2.1 Trend tracking data	14
8.3 Example of reporting CUE values	15
8.4 CUE derivatives	15
8.4.1 Purpose of CUE derivatives	15
8.4.2 Using CUE derivatives	15
8.4.3 Interim CUE	16
8.4.4 Partial CUE	16
8.4.5 Design CUE	16
Annex A (informative) Examples of use	17
A.1 Correct use of CUE	17
A.2 Carbon Usage Effectiveness category 1	17
A.3 Carbon Usage Effectiveness category 2	18
A.4 Carbon Usage Effectiveness category 3	18
A.5 Interim Carbon Usage Effectiveness category 2	18
Annex B (informative) Energy conversion factors	20
Annex C (normative) Carbon Dioxide Emission Factor	21
C.1 Determination of carbon dioxide emission factors	21
C.2 Examples for carbon dioxide emission factors	21
Bibliography	24

List of Figures

Figure 1 — Schematic relationship between the EN 50600 series of documents	6
--	---

List of Tables

Table 1 — CUE Categories	12
Table B.1 — Energy measurement methods at the data centre boundary	20
Table C.1 — EFC examples by energy source	21
Table C.2 — EFC examples for electricity from the grid by countries	22
Table C.3 — EFC examples for refrigerants	23
Table C.4 — Examples of GWP of GHG	23

European foreword

This document (EN 50600-4-8:2022) has been prepared by CLC/TC 215 "Electrotechnical aspects of telecommunication equipment". It is based on the text of ISO/IEC 30134-8:2022 "Information technology - Data centres key performance indicators - Part 8: Carbon usage effectiveness (CUE)".

The following dates are fixed:

- latest date by which this document has to be implemented at national level by publication of an identical national standard or by endorsement (dop) 2023-12-12
- latest date by which the national standards conflicting with this document have to be withdrawn (dow) 2025-12-12

Attention is drawn to the possibility that some of the elements of this document may be the subject of patent rights. CENELEC shall not be held responsible for identifying any or all such patent rights.

This document has been prepared under a Standardization Request given to CENELEC by the European Commission and the European Free Trade Association.

Any feedback and questions on this document should be directed to the users' national committee. A complete listing of these bodies can be found on the CENELEC website.

Introduction

The unrestricted access to internet-based information demanded by the information society has led to an exponential growth of both internet traffic and the volume of stored/retrieved data. Data centres are housing and supporting the information technology and network telecommunications equipment for data processing, data storage and data transport. They are required both by network operators (delivering those services to customer premises) and by enterprises within those customer premises.

Data centres usually provide modular, scalable and flexible facilities and infrastructures to easily accommodate the rapidly changing requirements of the market. In addition, energy consumption of data centres has become critical both from an environmental point of view (reduction of environmental footprint) and with respect to economical considerations (cost of energy) for the data centre operator.

The implementation of data centres varies in terms of:

- a) purpose (enterprise, co-location, co-hosting or network operator facilities);
- b) security level;
- c) physical size;
- d) accommodation (mobile, temporary and permanent constructions).

The needs of data centres also vary in terms of availability of service, the provision of security and the objectives for energy efficiency. These needs and objectives influence the design of data centres in terms of building construction, power distribution, environmental control, telecommunications cabling and physical security as well as the operation of the data centre. Effective management and operational information is important in order to monitor achievement of the defined needs and objectives.

Recognizing the substantial resource consumption, particularly of energy, of larger data centres, it is also important to provide tools for the assessment of that consumption both in terms of overall value and of source mix and to provide Key Performance Indicators (KPIs) to evaluate trends and drive performance improvements.

At the time of publication of this document, the EN 50600 series is designed as a framework of standards, technical specifications and technical reports covering the design, the operation and management, the key performance indicators for energy efficient operation of the data centre as well as a data centre maturity model.

The EN 50600-2 series defines the requirements for the data centre design.

The EN 50600-3 series defines the requirements for the operation and the management of the data centre.

The EN 50600-4 series defines the key performance indicators for the data centre.

The CLC/TS 50600-5 series defines the data centre maturity model requirements and recommendations.

The CLC/TR 50600-99-X Technical Reports cover recommended practices and guidance for specific topics around data centre operation and design.

This series of documents specifies requirements and recommendations to support the various parties involved in the design, planning, procurement, integration, installation, operation and maintenance of facilities and infrastructures within data centres. These parties include:

- 1) owners, operators, facility managers, ICT managers, project managers, main contractors;
- 2) consulting engineers, architects, building designers and builders, system and installation designers, auditors, test and commissioning agents;
- 3) facility and infrastructure integrators, suppliers of equipment;
- 4) installers, maintainers.

At the time of publication of this document, the EN 50600-4 series comprises the following documents:

EN 50600-4-1, *Information technology — Data centre facilities and infrastructures — Part 4-1: Overview of and general requirements for key performance indicators*;

EN 50600-4-2, *Information technology — Data centre facilities and infrastructures — Part 4-2: Power Usage Effectiveness*;

EN 50600-4-3, *Information technology — Data centre facilities and infrastructures — Part 4-3: Renewable Energy Factor*;

EN 50600-4-6, *Information technology — Data centre facilities and infrastructures — Part 4-6: Energy Reuse Factor*;

EN 50600-4-7, *Information technology — Data centre facilities and infrastructures — Part 4-7: Cooling Efficiency Ratio*;

EN 50600-4-8, *Information technology — Data centre facilities and infrastructures — Part 4-8: Carbon Usage Effectiveness*;

EN 50600-4-9, *Information technology — Data centre facilities and infrastructures — Part 4-9: Water Usage Effectiveness*

The inter-relationship of the documents within the EN 50600 series is shown in Figure 1.

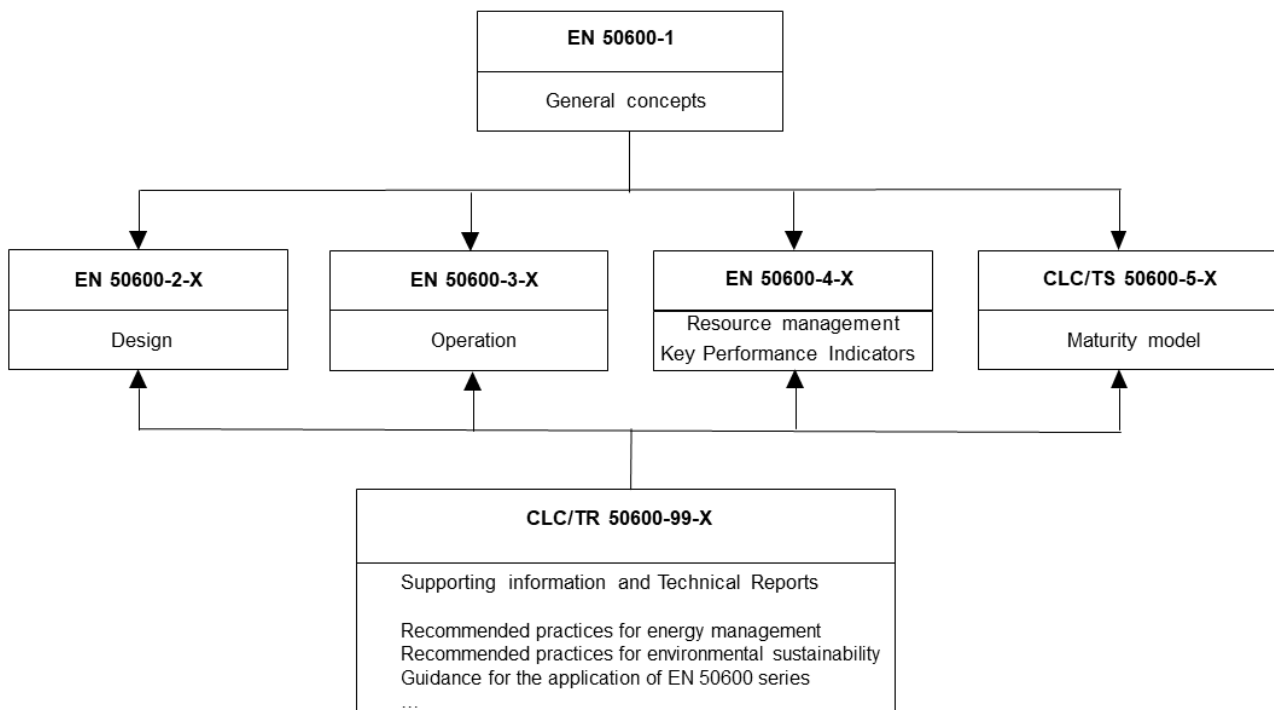


Figure 1 — Schematic relationship between the EN 50600 series of documents

EN 50600-2-X documents specify requirements and recommendations for particular facilities and infrastructures to support the relevant classification for “availability”, “physical security” and “energy efficiency enablement” selected from EN 50600-1.

EN 50600-3-X documents specify requirements and recommendations for data centre operations, processes and management.

EN 50600-4-X documents specify requirements and recommendations for key performance indicators (KPIs) used to assess and improve the resource usage efficiency and effectiveness, respectively, of a data centre.

NOTE Within the EN 50600-4-X series, the term “resource usage effectiveness” is more generally used for KPIs in preference to “resource usage efficiency”, which is restricted to situations where the input and output parameters used to define the KPI have the same units.

In today’s digital society data centre growth, and power consumption in particular, is an inevitable consequence and that growth will demand increasing power consumption despite the most stringent energy efficiency strategies. This makes the need for key performance indicators that cover the effective use of resources (including but not limited to energy) and the reduction of CO₂ emissions essential.

In order to enable the optimum resource effectiveness of data centres a suite of effective KPIs is needed to measure and report on resources consumed in order to develop an improvement roadmap.

These standards are intended to accelerate the provision of operational infrastructures with improved resource usage effectiveness.

This document specifies the Carbon Usage Effectiveness (CUE), which provides a quantitative metric for the CO₂ emissions attributed to a data centre. CUE is a simple method for reporting the CO₂ intensity of the data centre during operation. By reporting CO₂ emissions, it is possible to present the data centre’s contribution to climate change (enhanced greenhouse effect).

This document is intended for use by data centre managers. Carbon Usage Effectiveness (CUE) will provide the data centre manager quickly the sustainability of their data centres, compare the results, and determine if any energy efficiency and/or sustainability improvements need to be made. The impact of operational carbon usage is emerging as extremely important in the design, location, and operation of current and future data centres.

Additional standards in the EN 50600-4-X series will be developed, each describing a specific KPI for resource usage effectiveness or efficiency.

The EN 50600-4-X series does not specify limits or targets for any KPI and does not describe or imply, unless specifically stated, any form of aggregation of individual KPIs into a combined nor an overall KPI for data centre resource usage effectiveness or efficiency.

This document is intended for use by and collaboration between data centre managers, facility managers, ICT managers, and main contractors.

This series of European Standards does not address the selection of information technology and network telecommunications equipment, software and associated configuration issues.

1 Scope

This document specifies the Carbon Usage Effectiveness as a KPI to quantify the CO₂ emissions of a data centre during the use phase of the data centre life cycle.

This document

- a) defines the Carbon Usage Effectiveness (CUE) of a data centre,
- b) introduces CUE measurement categories,
- c) describes the relationship of this KPI to a data centre's infrastructure, information technology equipment and information technology operations,
- d) defines the measurement, the calculation and the reporting of the parameter,
- e) provides information on the correct interpretation of the CUE.

2 Normative references

The following documents are referred to in the text in such a way that some or all of their content constitutes requirements of this document. For dated references, only the edition cited applies. For undated references, the latest edition of the referenced document (including any amendments) applies.

EN 50600-4-1:2016, *Information technology - Data centre facilities and infrastructures - Part 4-1: Overview of and general requirements for key performance indicators*

EN 50600-4-2, *Information technology - Data centre facilities and infrastructures - Part 4-2: Power Usage Effectiveness*

ISO 8601-1, *Date and time — Representations for information interchange — Part 1: Basic rules*