

Urval av belysningsarmaturers märkningar enligt IEC 60598-1

Detta urval av symboler som är specifika för belysningsarmaturer. Fler symboler finns bland annat i figur 1 i SS-EN 60598-1.

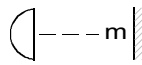
Rated maximum ambient temperature

$t_a \dots \text{°C}$

Warning against the use of cool-beam lamps



Minimum distance from lighted objects (metres)



Luminaires not suitable for direct mounting on normally flammable surfaces (suitable only for mounting on non-combustible surfaces)

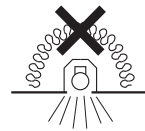


Surface mounted

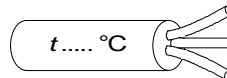


Recessed

Luminaires not suitable for covering with thermally insulating material

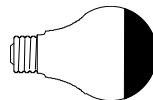


Use of heat resistant supply cables, interconnecting cables or external wiring



(The number of cores shown is optional)

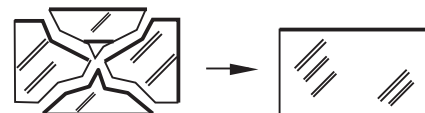
Luminaires designed for use with bowl mirror lamps



Rough service luminaires

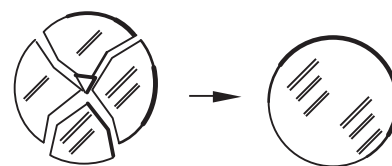


Replace any cracked protective shield



(Rectangular)

or



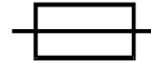
(Round)



Luminaire designed to be used only with self-shielded tungsten halogen lamps or self-shielded metal halide lamps



Luminaires with internal fuses



Do not stare at the operating light source



Följande symbol är hämtad från SS-EN 60598-2-24

Armatur med begränsad ytemperatur



Alla standarder finns att köpa på shop.elstandard.se.

Behöver du mer information kan du alltid ringa till SEK Svensk Elstandard på 08-444 14 00 eller skicka e-post till sek@elstandard.se.